

# FISHWAY STATUS REPORT

**Date:** 3/28/2015  
**Inspection Period:** 3/22 thru 3/28/2015

All JD Fishways are inspected twice per day during fish season, Mar. 1 - Nov. 30  
 Frequent monitoring of the PLC displays in SMF Fisheries Office as necessary.



## JOHN DAY DAM

JD/WC Project-Fisheries  
 P.O. Box 823  
 Rufus, Oregon 97050  
 Phone: 541-506-7860

<b>John Day Dam</b>	<b>Inspections</b>	<b>Criteria</b>	<b>Total Number of Inspections:</b> 14	<b>Temperature:</b> 47 F
	<b>Out of Criteria</b>	<b>Limit</b>		<b>Secchi:</b> 6.0 Ft.
<b>NORTH FISHWAY</b>			5 out of 6 AWS pumps available since 12/23/14	
Exit differential	0	≤ 0.5'		
Exit Control weirs	0	High setting	High setting is normal for JDN	
Count station differential	0	≤ 0.3'		
Weir crest depth (DS gauge)	0	1.0' ± 0.1'		
Entrance differential	0	1.0' - 2.0'	AVG 1.5	
<b>SOUTH FISHWAY</b>			3 AWS Turbines in regular service since 2/28/15	
Exit differential	0	≤ 0.5'		
Exit Control weirs	0	Med Setting	Mid setting is normal for JDS	
Count station differential	0	≤ 0.3'		
Weir crest depth (US gauge)	0	1.0' ± 0.1'		
South entrance differential	0	1.0' - 2.0'	AVG 1.5	
Entrance weir SE1	0	depth (≥ 8')	AVG 8.5	
Collection channel velocity	0	1.5 - 4 fps	AVG 3.15	
N. Entrance PH(Bay 19)differential	0	1.0' - 2.0'	AVG 1.6	
Entrance weir NE1	1	depth (≥ 8')	AVG 8.8	OOC at 7.7' on 3/24; adjusted immediately by Fisheries
Entrance weir NE2	1	depth (≥ 8')	AVG 8.8	OOC at 7.7' on 3/24; adjusted immediately by Fisheries
<b>JUVENILE PASSAGE</b>			JBS RTS was on 3/23.	
Forebay/bypass conduit differential	0	4.0' - 5.0'	AVG 4.5	
Submersible traveling screens	N/A	visual inspect	All STSs installed by 3/26/15.	
Turbine trashrack drawdown	N/A	<1.5', wkly		
Vert barrier screen drawdown	N/A	<1.5', wkly		
Spill volume	OOS		On seal since 11/30	
Spill pattern	N/A	per FPP	2015 Spill season is starting on 4/10 at 0001 hrs	
Turbine Unit Priority	0	per FPP		
Turbine 1% Efficiency	0	per FPP		

**SMOLT MONITORING FACILITY**

**Operations:** Functional RTS was on 3/24/15. Regular sampling mode starts on 3/31/15.

**Debris:** N/A

**Maintenance:** Calibrations and last minute adjustments of SMF components by JD Maintenance underway.

**Research:** N/A

None

**Fallbacks:** AVG:                      MAX:    0                      MIN:    0

**OTHER ISSUES:****JOHN DAY**

**BIRDS :** see the Avian Numbers tab. We report all species and locations, but in reality only gulls in the tailrace BRZ are relevant at JD.

JD Tailrace BRZ Avian Grid will be missing two across river lines # 26 & 27; JD Engineering was unable to reinstall them due to contracting issues.

It is impossible to predict if gulls will penetrate the grid through this gap; JD Fisheries will monitor and report on an increased predation if any results.

JD Engineering preparing to issue an improved/ multi- year contract for the lines maintenance during the next winter outage, in February 2016.

**Operations:**

JBS RTS was on 3/23/15. STS were installed by JD Structural crew 3/23 - 3/26/15. JBS in regular service since 3/27.

JD North Fishway has been in service since 12/23; 5 out of 6 AWS pumps are available. Repair work on pump 4 continues; pump 3 has vibration issues and should be the last in service.

JD South Fishway RTS was on 2/28/15. All 3 AWS pumps in service and are working properly.

**Maintenance:**

JD North AWS pumps - five out of total six are available. Repair of AWS pump # 4 by a contractor started on 1/26 & is ongoing.

MU 9 OOS for 5 -year overhaul on 3/17. Scroll case inspected on 3/18, no fish found. Draft tube very slow to drain/ exceeded 4 day FPP limit. See MFR.

Draft tube was successfully dewatered on 3/23 AM, only one live juvenile chinook was salvaged. No mortalities occurred due to this dewatering delay.

Calibration: 3/14/2015 All sensors were within the criteria of 0.3' .

**Research:**

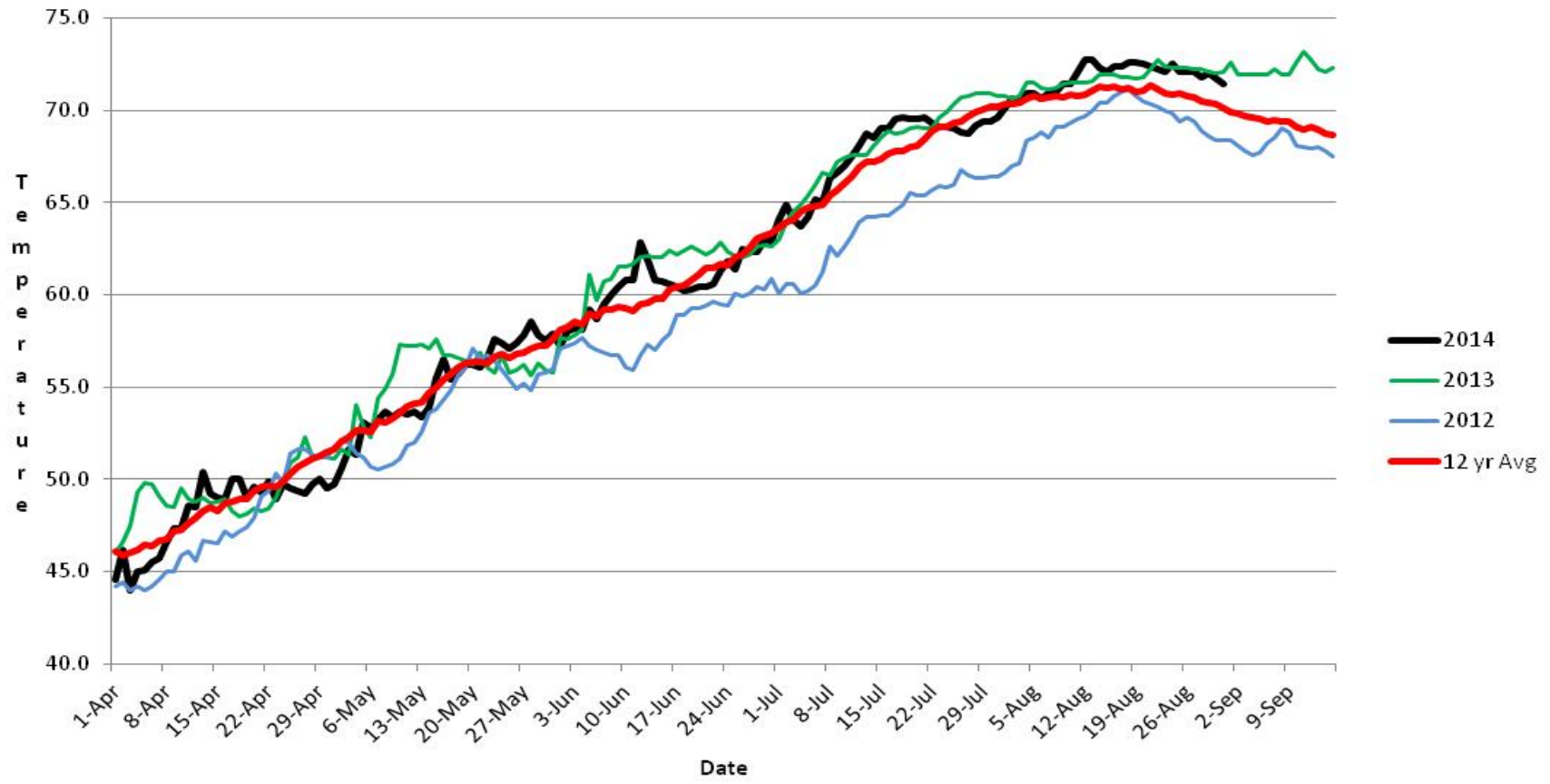
2015 Adult Fish Counting by Normandeau Associates will commence on 1 April, 2015. Security and safety coordination underway.

Adult Salmonids Radio telemetry evaluations are ongoing at both JD adult fishway. University of Idaho crew is in charge of detecting of all adult salmonids, which were tagged and released at Bonneville Dam.

Kevin Moynahan  
OPM John Day/Willow Creek Project

**Date:** 28-Mar-15

### JDA SMF Water Temp



## JDA Collection Channel Velocity

Date 26-Mar-15

By: ML/PR/MZ

Bay(s)	Time	Sec.	Velocity (f/s)
0-2	1:18	78	2.31
2 - 4	2:15	135	3.16
4 - 6	3:19	199	2.81
6 - 8	4:17	257	3.10
8 - 10	5:13	313	3.21
10 - 12	6:11	371	3.10
12 - 14	7:12	432	2.95
14 - 16	8:12	492	3.00
16 - 18	8:50	530	4.74
			<b>3.15</b>

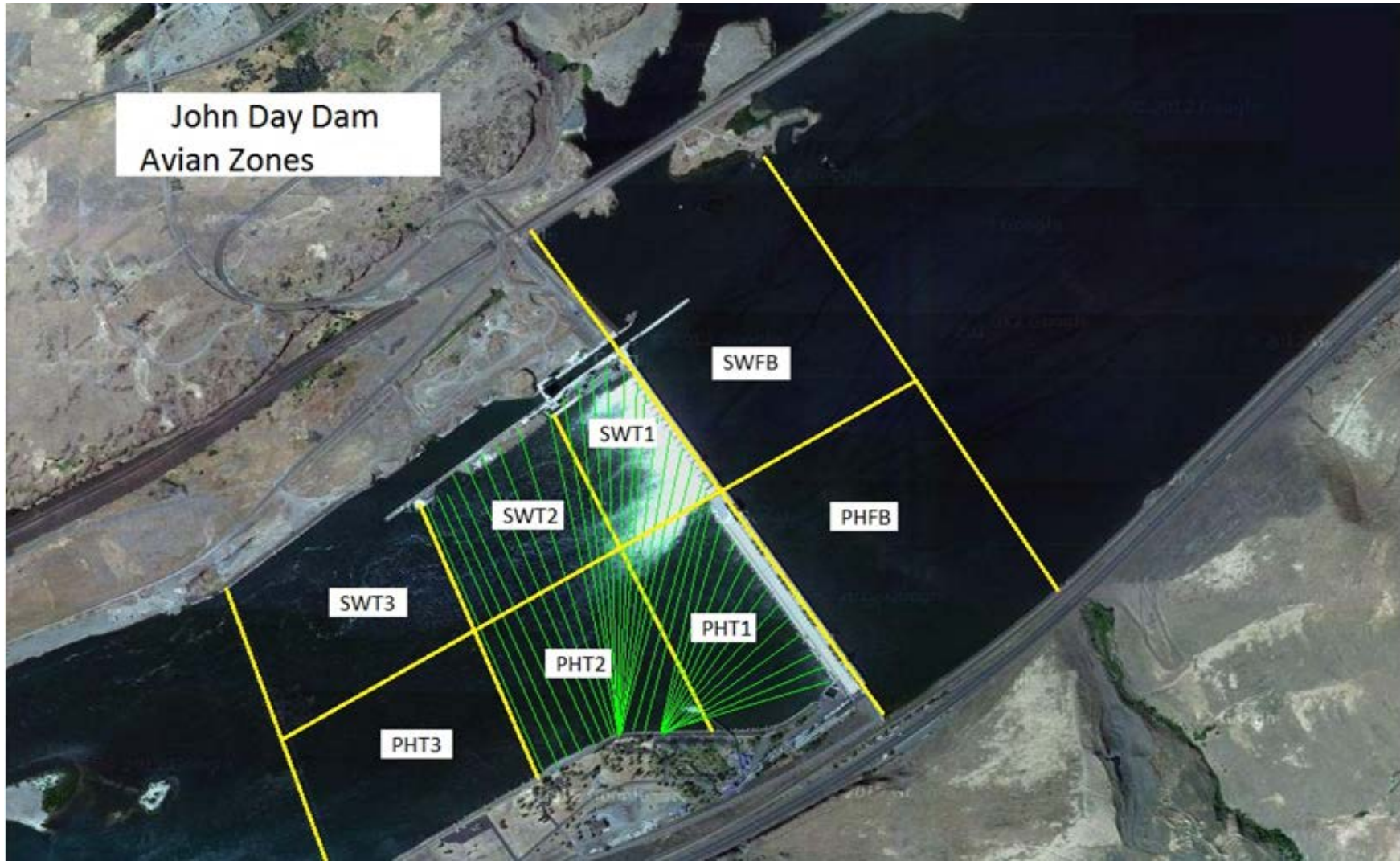
## 2015 JDA Piscivorous Bird Counts

(F=foraging, NF=non-foraging)

### Avian Bird Counts for the Week of March 22nd - March 28th

	Gull		Cormorant		Caspian tern		Pelican		Grebe		Total
	F	NF	F	NF	F	NF	F	NF	F	NF	
PHFB	0	0	2	28	0	0	0	0	26	9	65
SWFB	0	2	0	2	0	0	0	0	1	1	6
PH1	0	0	8	0	0	0	0	0	0	0	8
PH2	0	0	0	0	0	0	0	0	0	0	0
PH3	0	0	0	0	0	0	0	0	0	0	0
SW1	0	0	6	1	0	0	0	0	0	0	7
SW2	0	0	1	36	0	0	0	0	0	0	37
SW3	0	0	0	33	0	0	0	0	0	0	33
<b>Total</b>	<b>0</b>	<b>2</b>	<b>17</b>	<b>100</b>	<b>0</b>	<b>0</b>	<b>0</b>	<b>0</b>	<b>27</b>	<b>10</b>	<b>156</b>

John Day Dam  
Avian Zones



## John Day Weekly Averages

	Temp:	Secchi:	Fallbacks
Sun	46	6.0	
Mon	46	6.0	
Tues	47	6.0	
Wed	47	6.0	
Thur	47	6.0	
Fri	47	6.0	
Sat	47	6.0	
<b>AVG:</b>	<b>47</b>	<b>6.0</b>	<b>AVG</b>
			<b>MAX</b>
			<b>0</b>
			<b>MIN</b>
			<b>0</b>

	NE1	NE2	S.Ent	SE1	N.Ent	JBS Diff	Bay19
Sun	8.0	8.0	1.4	8.7	1.6	oos	1.7
Sun	9.2	9.2	1.5	8.4	1.4	oos	1.7
Mon	9.0	9.0	1.4	8.6	1.5	oos	1.6
Mon	8.2	8.2	1.4	8.7	1.5	oos	1.6
Tues	8.5	8.6	1.4	8.7	1.5	oos	1.5
Tues	7.7	7.7	1.5	8.2	1.6	oos	1.8
Wed	8.4	8.3	1.6	8.2	1.5	oos	1.6
Wed	8.3	8.3	1.6	8.2	1.5	oos	1.6
Thur	8.7	8.7	1.4	8.6	1.6	4.4	1.7
Thur	8.8	8.8	1.5	8.4	1.6	4.6	1.7
Fri	9.9	9.9	1.4	8.5	1.4	4.5	1.6
Fri	9.5	9.5	1.6	8.2	1.4	4.4	1.8
Sat	9.6	9.6	1.4	8.7	1.5	4.5	1.6
Sat	9.1	9.1	1.5	8.2	1.5	4.3	1.5
<b>AVG:</b>	<b>8.8</b>	<b>8.8</b>	<b>1.5</b>	<b>8.5</b>	<b>1.5</b>	<b>4.5</b>	<b>1.6</b>